



EAST SEPIK | PNG

2016/2017 DEPLOYMENT REPORT



Board of Trustees

YWAM Ships Kona's training and logistical support office is based in Hawaii, USA. The Board can be contacted via this office. See details on back cover.

Mr. Jack Minton - Chair

Mr. Brett Curtis - President

Mr. Jim Walker - Treasurer & Secretary

Mrs. Marjolein Coghi

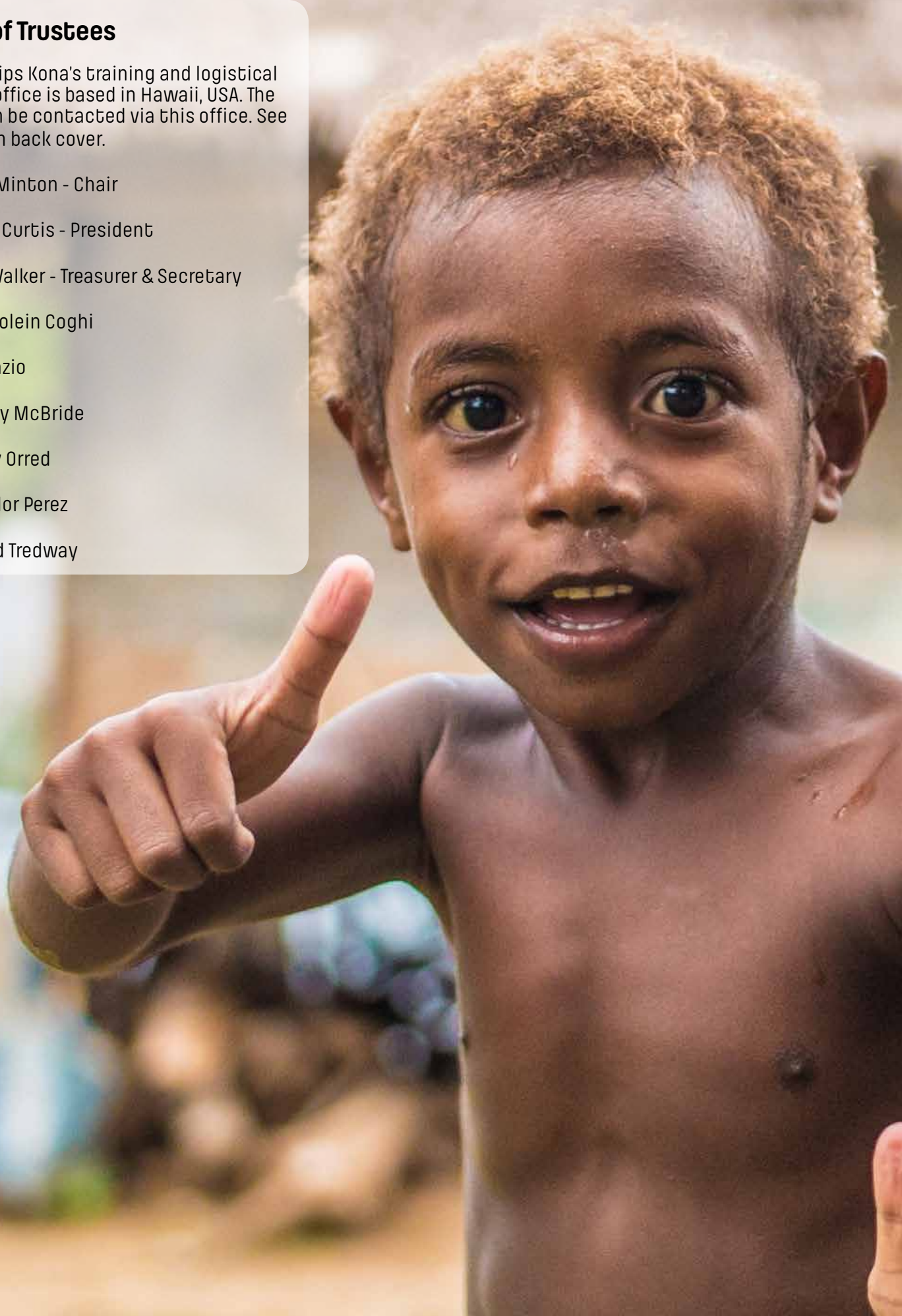
Mr. Tim Fazio

Mr. Murray McBride

Mrs. Judy Orred

Capt. Taylor Perez

Dr. Donald Tredway



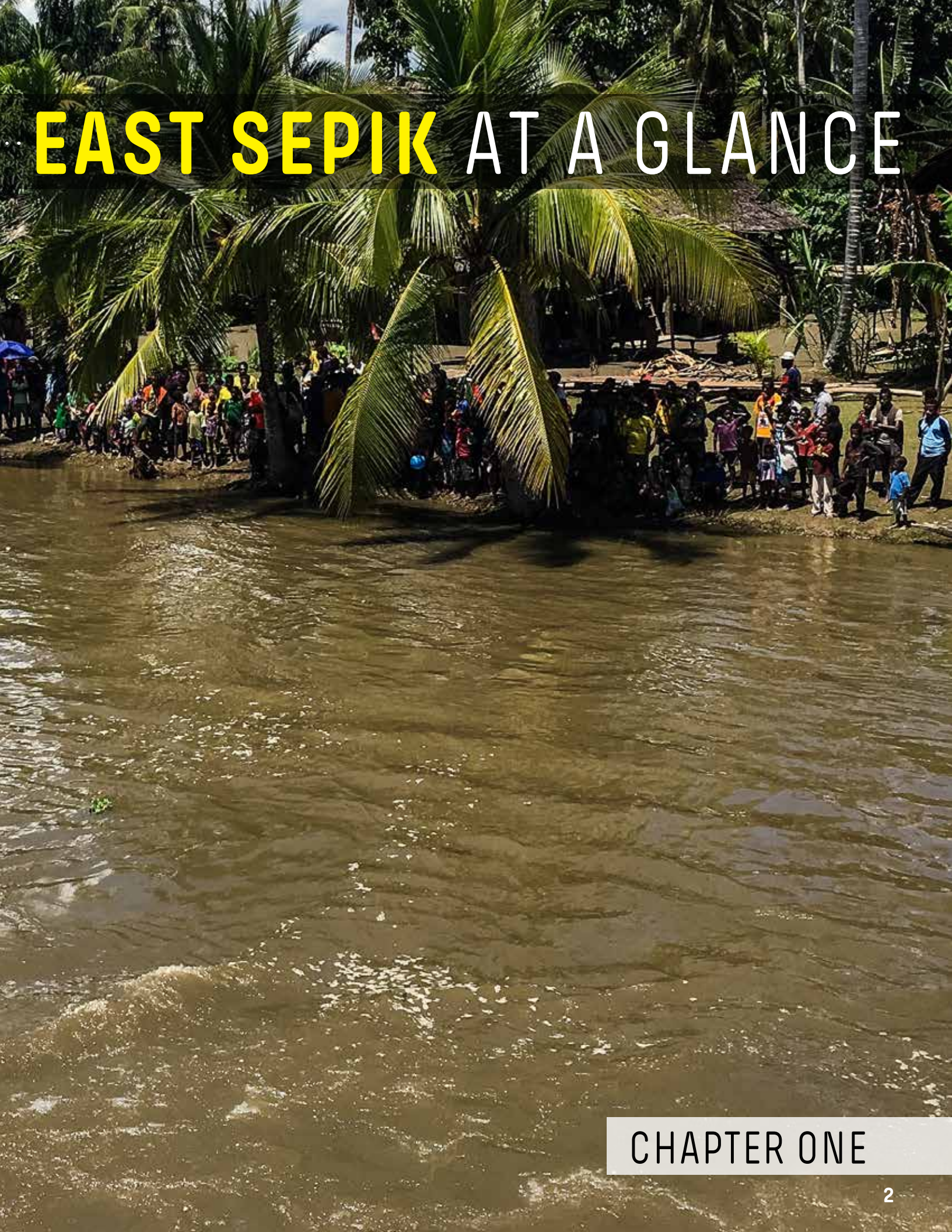




2016 AT A GLANCE	1
1.1 Executive Summary	3
1.2 Papua New Guinea Patron	4
PAPUA NEW GUINEA OVERVIEW	5
2.1 Primary Health Care	7
2.2 Lipoma	7
2.3 Clean Water	8
2.4 Health Promotion and Empowering Communities	8
2.5 Eye Health	9
2.6 Oral Health	10
STORIES	11
3.1 Abraham's Story	13
3.2 Vaccinations in Remote Regions	15
3.3 Wily's Story	17
3.4 Samaritan Aviation Partnership	19
WHO WE ARE	21
4.1 Maritime & Land Based Operations	23
4.2 Port YWAM Kona	25
4.3 Christian Magna Carta	27
4.4 UofN & YWAM Ships	28
ENDORSEMENTS	29
5.1 Endorsements	31
5.2 Key Partners	34







EAST SEPIK AT A GLANCE

CHAPTER ONE

MANAGING DIRECTOR'S LETTER

1.1 Executive Summary

The last 18 months has been a very significant period in Papua New Guinea. For the first time, there are two ships deployed in the nation. The m/v PACIFIC LINK out of Kona, Hawaii, and the m/v YWAM PNG from Townsville, Australia. A third ship operated out of Newcastle, Australia, the s/y RUACH, is preparing to join mid 2017.

This report focuses solely on the 2016/2017 deployment of the m/v PACIFIC LINK and the medical and training outcomes from her outreaches in and around the waters of the East Sepik Province.

With an invitation to partner with the provincial health authority, YWAM and local PNG volunteers worked hard making several trips to the islands off the coast of Wewak & to locations 85 miles up the Sepik river. **We are happy to report the crew from the m/v PACIFIC LINK have served 16,794 patients in 50 villages, with an additional 8,452 people served with health education, water filters & other services.**

It has proven to be an excellent season of partnership within PNG working with East Sepik's provincial health staff, their remote aid post staff, as well as private organizations. Others donated gifts in kind and many hours of service, such as the PNG Ports, Swire Shipping, Consort, Samaritan Aviation and the local churches of Wewak.

The 2016/2017 deployment of the m/v PACIFIC LINK has so far resulted in an economic **impact into the rural sector of the province of over \$4,046,211 PGK**, most of which affected the island and river communities.

We all realize that an unhealthy family is an unproductive family. When one or more members are ill it affects the entire family. One of the stories that captured our hearts while up the Sepik river was from Willie, a man who was blind for 11 years. Like so many do, he made his way to our ship by canoe. His lack of options created an incredibly bleak future. A 40-minute operation on board our medical ship by a volunteer surgeon from Wewak returned his dignity. Read about it in the section about our ophthalmic services.

Stories like this are only made possible because of the hundreds of people who volunteer. They have joined us from Papua New Guinea and from more than 20 different nations around the world. For all those who help make this possible, thank you.

Enjoy reading this report.



Brett Curtis
YWAM Ships Kona





EAST SEPIK PROVINCIAL GOVERNMENT
Office of the Governor

Telephone: 456 2146
Facsimile: 456 2860
Email: espa.officeofpa@gmail.com

P O Box 899
WEWAK
East Sepik Province

January 17, 2017

Mr. Brett Curtis
Managing Director
YWAM Ships Kona
75-5687 Ali'I Drive
Kailua-Kona, HI 96740
USA

Dear Mr. Curtis,

Thank you for your presentation of YWAM Medical Ships ministry here in Papua New Guinea and your work aboard the MV Pacific Link.

I am very humbled by your full-time volunteers that reach out to some of the most difficult terrains in our country providing medical services to our rural communities.

As the Governor of East Sepik, I have an obligation to provide medical services for my people, to improve infrastructure and health facilities and more important increase capacity for health workers. Your partnership with us greatly encourages our efforts.

In addition to your medical ship that serves our coastline, may I also thank you for your service to our inland communities of the Sepik River.

I commend you, YWAM Ships Kona, for the work you have done and your collaboration with our East Sepik Authorities to provide care to the people in some of our most remote and needy locations.

On this notion, it is an honor to provide this strong endorsement for your mission.

Yours sincerely,

M T SOMARE GCL GCMG CH CF GCRS KStJ
Governor





PAPUA NEW GUINEA OVERVIEW

CHAPTER TWO



SERVICES PROVIDED



2.1 Primary Health Care

The backbone of field activities continues to be support to the National Health Plan Key Result Area 4 (Improve Child Survival) and 5 (Improve Maternal Health). This is achieved through collaborative mobile clinics in areas where provincial and district health teams are currently not able to fully implement their planned quarterly Integrated Maternal-Child Health

patrols (also incorporating general health care needs as necessary).

Total number of Primary Health Care (PHC) patients seen from the deployment of M/V PACIFIC LINK across the Province **16,794**

Total number of Primary Health Care services provided:

- PHC Consultations: 6,565
- PHC Treatments: 6,425
- Disease Consultations: 3,318
- Immunizations: 5,944
- Malaria / Tuberculosis : 518



2.2 Lipoma



WHAT IS A LIPOMA?

A lipoma is a growth of fat cells in a thin, fibrous capsule usually found just below the skin. Lipomas aren't cancer and don't turn into cancer. They are found most often on the torso, neck, upper thighs, upper arms, and armpits, but they can occur almost anywhere in the body.

Total number of lipoma surgeries provided: **13**





2.3 Clean Water



Total number of people served with clean water filters: **1,925**



2.4 Community Health Education / Promotion



The total number of people trained in Community Health Education & Promotion: **3,383**





2.5 Eye Health



OPTICAL

Total number of optometry consultations: **5,712**

- Total number of reading glasses distributed: **3,492**
- Total number of distance glasses distributed **941**
- Total number of sunglasses distributed: **75**

OPHTHALMOLOGY

- Cataract Surgeries: **217**





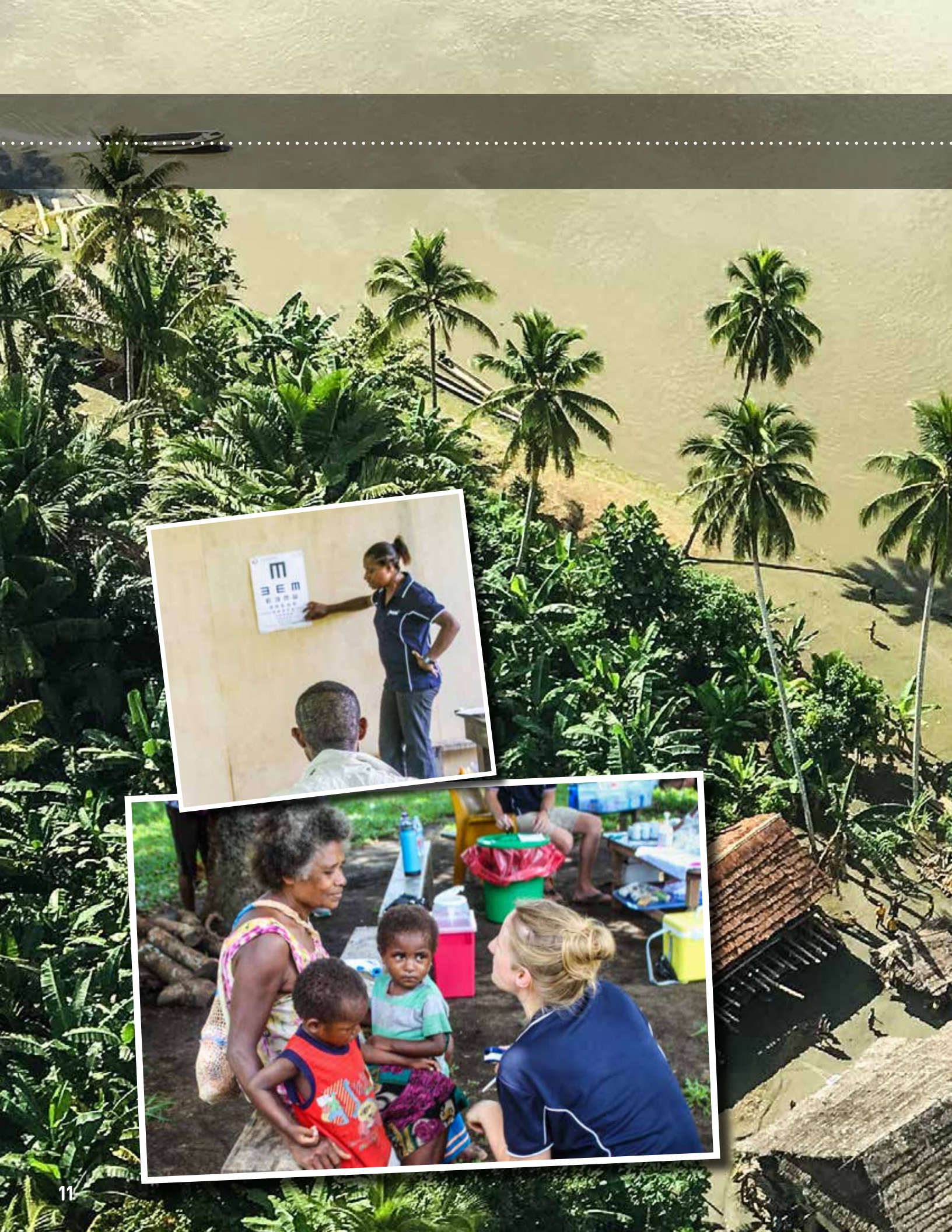
2.6 Oral Health



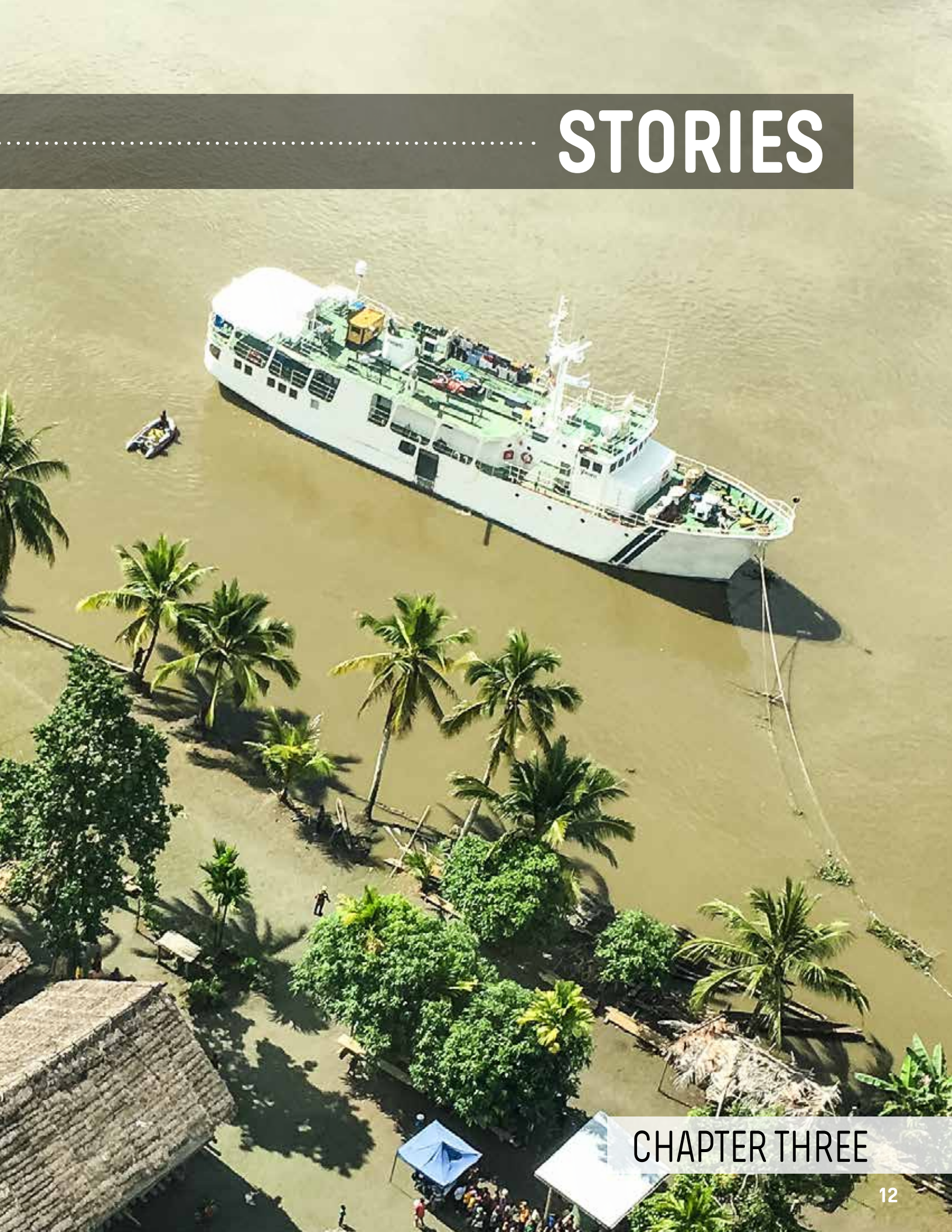
Total dental services provided through our mobile dental clinics:

- Total dental extractions: **1,122**
- Total dental restorations: **228**





STORIES



CHAPTER THREE



3.1 Abraham's Story

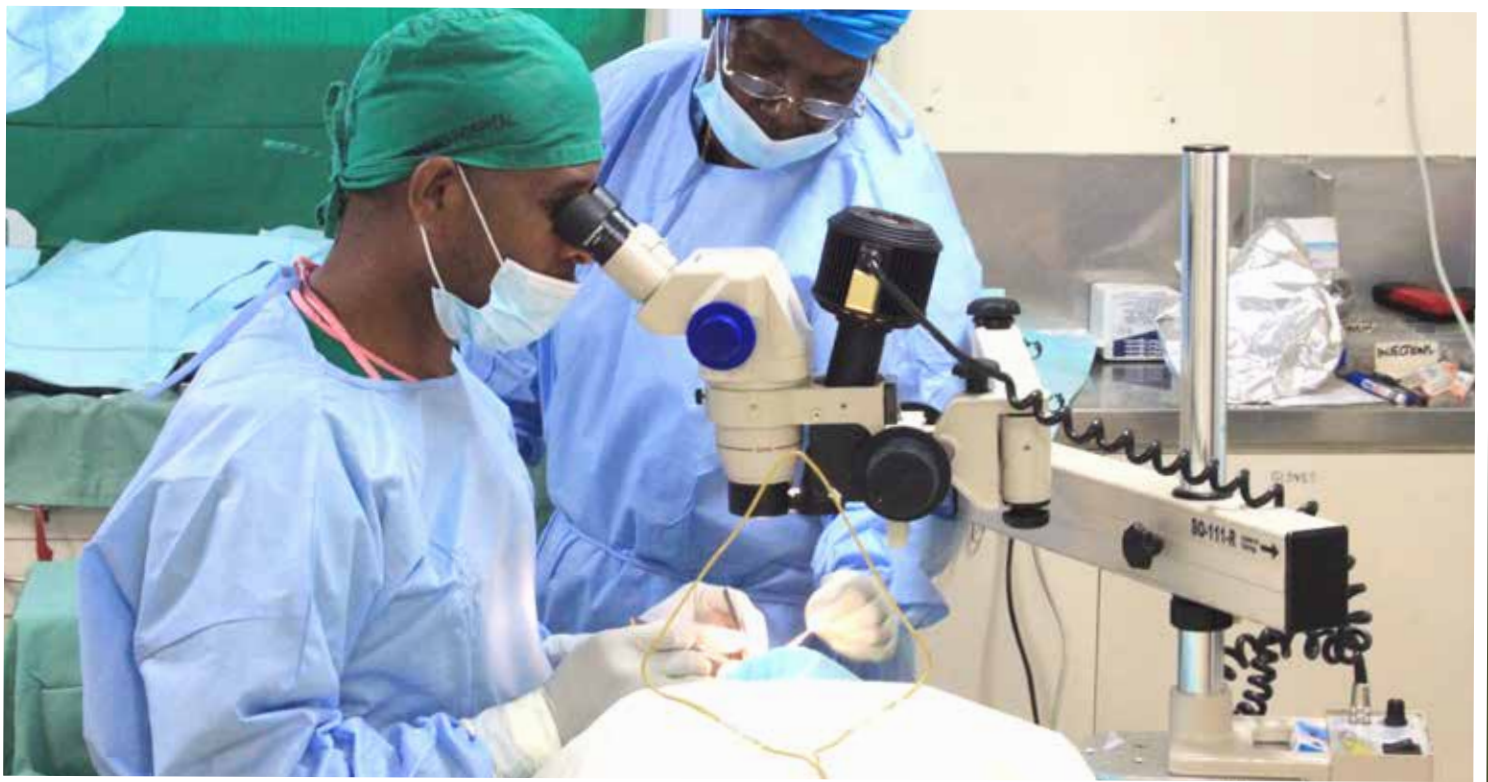
I Can See Colors! All Of The Colors!

TARAWAI ISLAND, Papua New Guinea — As the sun dawned here in this isolated place, there was a palpable sense of anticipation. Something unheard of was about to happen to this little community — sight was returning to blind eyes. Eleven people, men and women, young and old, perched on a wooden bench. Some were dressed in their Sunday best, some in casual clothing. Families gathered around a few while friends chattered with others. While they were dissimilar in many ways, these 11 had something in common: Large green plastic shells covered their eyes, holding bandages to left and right eyes alike.

One man, Abraham, had been dreaming of a day like this for almost 17 years. He began having vision problems in 1999 and he had been totally blind for the last three years of his life because of cataracts, a condition that causes clouded vision. His days consisted of sitting in his house alone for hours. He had a cane, but was not able to navigate the village safely or quickly by himself and he had no family to help him. Abraham had lost his job and most of his quality of life due to his blindness.

One day a teacher, Timothy, told Abraham that a ship was coming to the island that could help him. Abraham and the whole island eagerly awaited the arrival of the m/v PACIFIC LINK, the YWAM Ships Kona training and medical ship, and the life-changing help it would bring.





Abraham was screened and chosen for the first cataract surgeries to be held off the coast of Tarawai. When the day arrived, he was escorted on board, by a zodiac inflatable, with 10 other people and taken into the clinic. The day finished and patients were brought back to their homes to rest and prepare for the moment everyone was waiting for.

The following morning, what seemed like the whole island's population gathered around the clinic area as the eye doctors arrived and began assessing their patients. One by one, green plastic shells were removed and tentative eyes opened. There was a moment disbelief in the people's faces as they looked around and realized that the cloudiness and darkness was no longer before their eyes; they could see! One man excitedly cried out, "**I see colors! All of the colors!**" Women stood tall and proud as they passed eye tests with ease. Smiles and laughter and wide-eyed gazes abounded. A new lease on life had been given to them!

Abraham sat patiently on his bench, his cane next to him. A collective breath was held as his bandages were taken off and he looked around for the first time. A shout went up, a passionate cry of, "That's God! That's God! That's God! Hallelujah!" **The first reaction to sight for a man who had been blind for years was to cry out praise to his God.** The words kept bubbling out of his mouth, "Very happy! I'm so happy! I'm crying!" He was beaming and his joy spilled out contagiously. People from his community introduced themselves to Abraham properly for the first time ever. He wanted to be in every picture and shake every hand. **He was filled with plans for his**

new life; he could go swimming, walk around the island, even go for a run! No longer confined to his house or to a seat on the ground, Abraham had his life back!

As the people weaved their way through follow-up appointments and instructions from the doctor, they kept almost sneaking looks at the world around them. Only Abraham had been totally blind out of the group, but even losing sight in one eye to cataracts can severely impair a life. Thanks to the doctors and YWAM Ships Kona, miracles were brought to Tarawai on a day that will never fade from history.





3.2 Vaccinations in Remote Regions

WALIS ISLAND, Papua New Guinea — The ocean breeze was stirring the palm trees as kids peeked out from behind huts watching the YWAM team bring yellow ice chests and big blue plastic boxes to a clearing on the beach. A baby scale was hung from a tree, gloves were snapped on, syringes lined up in a neat row.

It was October on Walis Island when the team of two nurses and two Discipleship Training School students helped vaccinate almost 200 children in one day alone. The vaccinations given out protect children from diseases like Hepatitis B, tuberculosis, polio, whooping cough and tetanus.

A few weeks before the m/v PACIFIC LINK — a YWAM training and medical ship — left the Wewak Port, a woman contacted someone on board asking if a certain medicine was carried there. Her 4-year-old son had contracted tetanus from an infected cut and he had never received a tetanus vaccination. The particular medicine used to treat tetanus was not on the ship at the time and the woman was told to immediately go to the hospital for help. Then we learned the child had passed away overnight because they were unable to obtain the medicine.

Tetanus is an entirely preventable disease to those who grow up in developed countries. Most people barely remember the shot that gave their immune systems the strength to fight off sickness. This is not the case in the remote villages and islands of Papua New Guinea.





Diseases that people from more developed nations often only hear about in history books, like polio and tuberculosis, run rampant among families and communities here. Access to life-saving immunizations is limited often because of the physical location of the villages, cost of the actual medicine, and health workers to administer the vaccines. Babies are dying of preventable diseases and there's nothing their families and loved ones can do to stop it.

Because of limited access to vaccines, children living in rural areas are twice as likely as those in the city "to die before their fifth year", according to a report on Papua New Guinea prepared by David McLachlan-Karr, a U.N. resident coordinator. The report later notes that nearly a third of children who die before reaching age five die "in the first month of life."

The YWAM team on the PACIFIC LINK is helping to change these stories of heartbreak and loss.

Babies bawled in their mothers' arms and elementary school children tried to put on a brave face in front of their friends as Danielle Lechner and Ellie Gallienne moved quickly and efficiently as a team to administer the shots.

"Immunizations are something that are so expected and so easy to get in the U.S., yet it's so unavailable here. Being able to bring vaccines to this village and

island is quite the honor," Lechner said.

The impact that these vaccinations have will carry on long after the tears have dried and the ship has sailed. Babies will have a better chance at life and students will be able to run and play freely, unaffected by illnesses that could have robbed them of their health and lives. Thanks to the PACIFIC LINK and the many volunteers living on board, the potential of unnecessary deaths in Walis Island, and many other villages, was reduced.





3.3 Wily's Story

MOIM VILLAGE, Papua New Guinea — For years, Wily Kasu lived and worked on Kar Kar Island in Madang Province. His son-in-law wasn't sure exactly when he started having eye problems, but in 2006 he finally had to return home to his family on the Sepik River. He had finally lost his long battle with this infirmity, but at least being home meant everything was now a little safer and more familiar.

His son-in-law became his primary caregiver throughout the day, serving him in this manner for more than a decade. When he heard the m/v PACIFIC LINK — a YWAM training and medical ship — was sailing up the Sepik River and bringing eye care, he decided to bring Wily to the vessel in hopes the doctors on board could help his sight improve. Dr. David Palau was serving on the ship, performing surgeries on dozens of people in East Sepik Province since its arrival.

After Wily was screened and chosen to receive surgery, Dr. Palau asked him if he wanted just one eye operated on or both. Wily said that he would never get another opportunity to do the other, so elected for both eyes.

At the end of the first surgery, Wily was already beginning to see more clearly. Immediately after completing the two eye operations — while still in the sterile operating room — they placed two patches over his eyes until the following day when they would be cleaned out and removed.

In the morning, patients from the previous day's



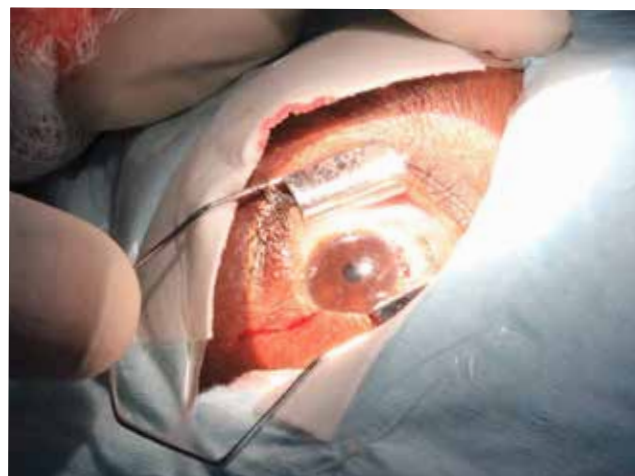


surgeries — including Wily — sat quietly on a long wooden bench as they waited for follow-up examinations. They each waited patiently for the patches to come off so they could begin a new chapter of their lives. But despite blindness being their norm, the anticipation of potentially recovering their vision was an emotional ordeal. It was quite common for as many as 28 people a day sit there ready to start a new life with fresh sight during the PACIFIC LINK's outreaches in January.

In most cases, patients have one of their immediate family members with them or a

close friend waiting for that moment when they can look at each other and reacquaint themselves. In some cases, the formerly blind have to be introduced to relatives they've never seen.

Incredible hope floods in as they begin to plan together what they will do after their canoe ride home. Walking without a stick or help from someone, cooking again, perhaps work in the gardens. In many cases the sight of new children or grandchildren is the most anticipated "first thing" they speak of.





3.4 Samaritan Aviation Partnership

YWAM Ships Kona and Samaritan Aviation have forged a partnership to deliver much needed health services to remote parts of the Sepik River. The m/v PACIFIC LINK anchored off Mabuk Village while two Samaritan Aviation Float planes landed on the river. A specialised team of health professionals were transported out to another location on Murik Lakes.

Through our partnership with Samaritan Aviation, we were able to screen and transport eye patients back to the ship for cataract surgery. People from over 5 villages were able to receive services because of these organisations working together.

It was a busy day for everyone, and the only problem encountered was running out of vaccines. Murik Lakes had not received these kind of services for many years. A quick 5 minutes flight back to the ship and they were restocked and the immunisations continued without a hitch. We had one special surprise patient on board, Rosa (Somare) Komanb. We knew that Murik Lakes had a special place in Grand Chief Sir Michael Somare's heart, but we



had no idea that we would have the privilege of operating on his sister's eye. She came on board the m/v PACIFIC LINK for a cataract surgery. She was one of the 6 ladies that we were able to fly in and out to receive the gift of sight.

What a special way for YWAM to say 'Thank You' in a practical way to the Governor who invited us into the Province. We would also like to thank Mark and Kirsten Palm of Samaritan Aviation for their great team work and look forward to working together again soon.



YWAM SHIPS KONA - M/V PACIFIC LINK



..... WHO WE ARE



CHAPTER FOUR

SHIP & LAND OUTREACHES



4.1 Maritime & Land Based Operations

Many of the communities served by the ship lie in uncharted coastal waters. A high intensity tempo saw teams working on the ship and in villages ashore each day. We also executed advance work to confirm village interest in collaborating with medical ship personnel and to identify specific suitable anchorages.

A summary of 2016/2017 milestones and highlights are as follows:

- Completion of five-year special survey.
- Completion of external audits and issuance of interim and full International Safety Management Document.
- Donation and application of fuel efficient, long-lasting underwater paint system (life cycle of paint expected to exceed five years).
- The Mother Ship concept proved very effective with multiple small boats operating to shore. This maximized each outreach and multiplied the reach at each location.
- Patrols were done on Islands and 85 miles up the Sepik river. Each location had no or insufficient hydrographic chart data. Crew relied on small tenders to survey anchorage points close to shore.



East Sepik Region





PORT YWAM KONA

4.2 Port YWAM Kona

Youth With A Mission (YWAM) is a global movement of Christians from many cultures, age groups, and Christian traditions, dedicated to serving Jesus throughout the world. We unite in a common purpose to know God and to make Him known.

Founded in 1960, YWAM operates in more than 1,400 locations in 180 countries and currently has a staff of over 20,000. YWAM is decentralized in structure;

each center is financially and legally autonomous, allowing locations to adapt and serve the specific needs of the community.

YWAM Ships Kona exists to serve the most isolated and disadvantaged islands. Using ships to access these villages is not just the best option, it is the only one. We bring hope to the least reached, those who live on the hundreds of islands & waterways without airports.

sail study serve





4.3 Christian Magna Carta

Christian Magna Carta

Youth With A Mission affirms the Christian Magna Carta which describes the following basic rights as implicit in the gospel. Everyone on earth has the right to:

- Hear and understand the gospel of Jesus Christ
- Have a Bible available in their own language
- Have a Christian fellowship available nearby, to be able to meet for fellowship regularly each week, and to have Biblical teaching and worship with others in the Body of Christ.
- Have a Christian education available for their children.
- Have the basic necessities of life: food, water, clothing, shelter and health care.
- Lead a productive life of fulfilment spiritually, mentally, socially, emotionally, and physically.
- We commit ourselves, by God's grace, to fulfil this covenant and to live for His glory.



4.4 University of the Nations and YWAM Ships Kona

On the big island of Hawaii sits the University of the Nations Kona campus, also known as YWAM Kona. It is one of YWAM's larger university campuses, training hundreds of students every year and sending them out all over the globe. Within a mile of this campus is the YWAM Ships Kona location, nestled right in downtown Kona. Port YWAM sits across from the pier where the first missionary arrived in Hawaii and where later in the 1800's, five different missionary vessels were sent out to serve in Pacifica. Now the legacy of this island continues as vessels again serve their neighbors across the liquid continent from this same location.

We recognize that ships naturally open national doors more quickly and effectively than ground teams who may work years to achieve the same

results a ship can achieve with one visit. This acceleration is expanding the scope and reach of both YWAM locations in Kona. Within the YWAM family we have referred to the 'twin ministries' of ships and universities for decades and we are seeing it realized with the vessel we have engaged in Papua New Guinea. The university teams arrive with a wide variety of training and skills, and can move into areas where the ships have broken ground and accelerated relationships and favor beyond anything we have previously known. One meets immediate human needs while the other builds and strengthens for the future through teaching and training.

This is a unique collaboration of service to a nation that we are establishing together.



The background image shows a traditional thatched-roof structure, likely a hut or shelter, nestled within a dense tropical forest. The roof is made of dried palm fronds or similar natural materials, showing a textured, layered appearance. The forest is lush with various green plants, including banana leaves and tall, slender trees. The lighting is bright, suggesting a sunny day. A semi-transparent dark blue horizontal band is overlaid across the middle of the image, containing the title text in yellow.

Endorsements & Partners

APPENDIX

ENDORSEMENT LETTERS

5.1 Message from Patron – Papua New Guinea

I am proud, in my fifth year as Patron of YWAM Medical Ships PNG, serving alongside my Australian co-patron, Honourable Mike Reynolds, to celebrate the great achievements in Madang Province.

I am pleased to witness the strong support continue from the PNG National Government and the provincial Governments of the Momase region. What an immense privilege to be able to work together with them to help bridge a current gap in basic rural health service delivery, whilst building capacity in our health workers and moving toward the goals our Government has established for health.

I am deeply grateful to every partner who has joined on the journey to date and helped on this vital mission in areas of compelling human need.

I am happy to convey my heartfelt congratulations to the YWAM team. Their sincere commitment, care and dedication to see sustainable development in the nation, and to champion young Papua New Guineans in particular, is to be commended.

I look forward with much anticipation to what the future will hold.



A handwritten signature in black ink, which appears to read 'Rabbie Namaliu'.

The Right Honourable Sir Rabbie Namaliu GCL KCMG CSM
Patron – Papua New Guinea



WEST NEW BRITAIN PROVINCIAL GOVERNMENT
OFFICE OF THE GOVERNOR

Room B1-63 National Parliament
WAIGANI NCD
Papua New Guinea
Tel +675 3277 655
Fax +675 3277 267

Sir Buri Kidu Trust Office
Tel +675 311 3402
Tel +675 311 2768
Fax +675 311 2052

31 May 2016

Mr. Brett Curtis
Executive Director
YWAM Ships Kona.
75-5687 Ali'i Drive
Kailua Kona, HI 96740
USA

Dear Mr. Curtis

As the Governor of West New Britain and on behalf of its Provincial Government, I am writing to express my deep gratitude and strong support to YwAM Ships Kona and its important work in the nation of Papua New Guinea (PNG)

I commend your program working alongside our national, provincial and local level governments helping us to overcome isolation in rural areas. Your partnership with our nation brings much needed health and capacity building services deep into our rural sector where it is needed most.

I am proud that our government has taken the opportunity to partner with organizations such as YWAM, to find innovative solutions to some of the difficulties we face. The natural features of our country, alone, make it very challenging to deliver the level of health education services to which we are committed. **YWAM Ships is a strong partner for us as we make this journey forward.**

All the YWAM personnel are to be commended as they so diligently donate their professional services as volunteers aboard the Training and Medical Ships. This is profound level of commitment and friendship

Leveraging support across volunteer services, community donations corporate sponsorship and governmental contributions, enables this valued-added approach to create a very potent patrol model. I salute your long term investment to our isolated islands and inland waterways such as the Sepik River

Already, since work first began in our PNG waters in 2010, 60 million PGK of value has been injected into the rural sector of our economy. This comes from the 450,000 healthcare service deliveries accomplished by your organization. You are to be congratulated!

In conclusion, we look forward to a strong future of partnering together in service of the people of West New Britain.

Yours sincerely

HON SASINDRAN MUTHUVEL, MP
GOVERNOR



**MINISTER FOR HIGHER EDUCATION,
RESEARCH, SCIENCE & TECHNOLOGY**



Tel: + 675 301 2011/ 301 2010

Fax: + 675 325 0622

Email: Steno.Minister@ohe.gov.pg

Location: Level 2, Mutual Rumana, WAINI, NCD

P.O. Box 5117

BOROKO

National Capital District

Papua New Guinea

In Recognition of YWAM Ships

WHEREAS, YWAM Ships is a worldwide Christian movement that aims to care, connect, serve and build with individuals and communities. YWAM Ships values individuals rights to quality of life and is actively developing communities by addressing healthcare and training needs in Papua New Guinea with a focus on rural areas.

WHEREAS, YWAM Ships has made a long term commitment to the people of Papua New Guinea in the islands and river ways with vessels the *MV Pacific Link* and *MV YWAM PNG*.

WHERE AS, YWAM Ships is committed to the working in partnership with PNG national, provincials and district governments and signed a Memorandum of Understanding (MOU) with the PNG National Department of Health (NDoH) in 2011.

WHEREAS, YWAM Ships sails with an international professional crew who all volunteer their time;

WHERE AS, YWAM Ships full time crew and staff are all graduates from one of 600 University of the Nations (UofN) campuses worldwide;

WHEREAS, YWAM Ships has executive offices and fleet support operations in both Kailua Kona, Hawaii, USA, and Townsville, Queensland, Australia;

WHERE AS, YWAM ships conducts navigation and healthcare training for it's operations on board it's growing fleet;

WHEREAS, YWAM Ships is a maritime movement of 23 vessels globally;

WHEREAS, YWAM Ships PNG provides over 77,000 medical and training services annually;

WHEREAS, YWAM Ships provides rural placement in areas that universities are currently not able to access. In a mentored setting, students are exposed to the real need for medical and marine personnel in rural areas, giving them a new depth of experience and motivation to provide quality health services for PNG.

NOW THEREFORE, the undersigned endorses the innovative good work and commends the extraordinary vision of YWAM Medical Ships in Papua New Guinea.

Signed:

Dated:

02/12/2016

Title:

MINISTER

KEY PARTNERS

5.2 Key Partners



JUSTICEWATER



The Fred Hollows Foundation



INFLATABLE BOAT SPECIALISTS





Get involved
ywamships.net



75-5687 Ali'i Dr. | Kailua-Kona | Hawaii | USA 96740

Phone: +1 808 757 9150 | FAX: +1 949 271 4909

info@ywamships.net | www.ywamships.net

USA VERSION DATE 2/20/2017